

Final Event  
24-25<sup>th</sup> of May 2022

# VEEM P-HEV Democar



Powerful **A**dvanced **N**-Level **D**igital **A**rchitecture  
for models of electrified vehicles and their components

Sylvain Roquet  
Valeo EEM



[www.project-panda.eu](http://www.project-panda.eu)



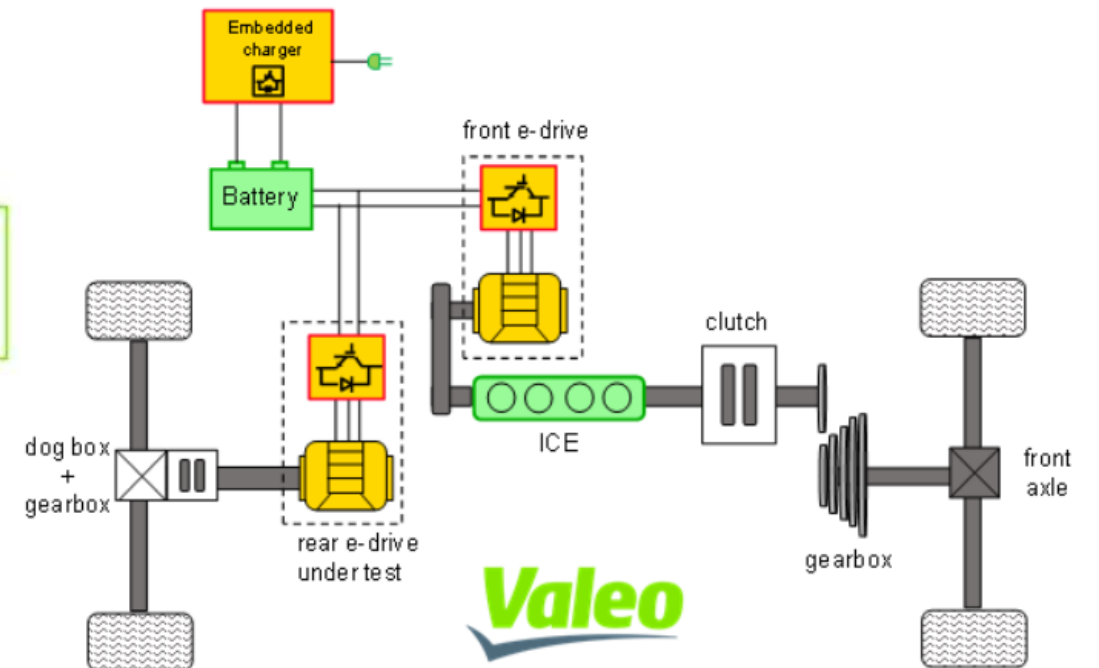
# Democar Vehicle presentation



🐼 **Base vehicle:** Peugeot 308 130ch



🐼 **PHEV architecture:**



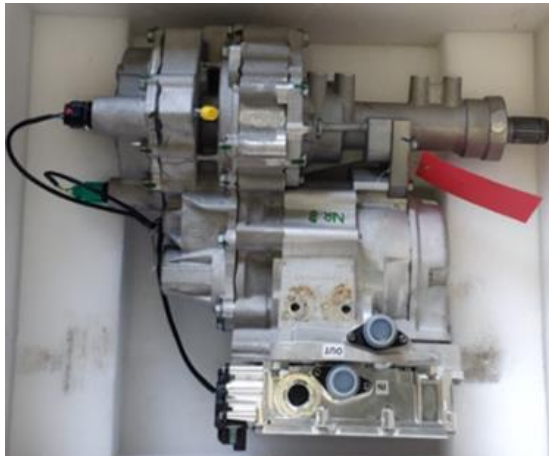
# Valeo rear e-drive Presentation



**e-drive = Permanent Magnets Synchronous Machine (PMSM) + Inverter**

## **Valeo Physical rear e-drive:**

- 25kW peak power
- Low voltage 48V
- Watercooled



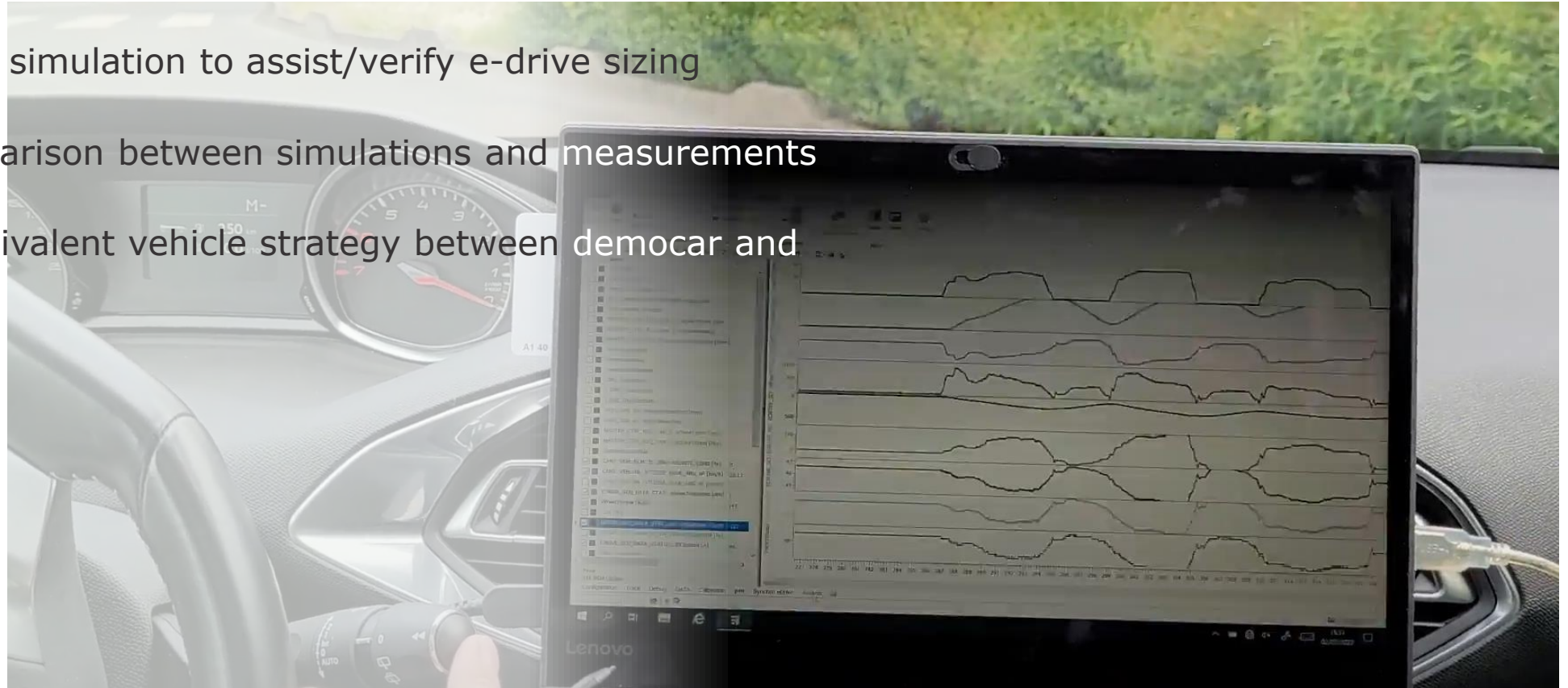


**Valeo**

# Democar within PANDA



- 🐼 **Valeo Democar** used as a reference to dimension the modelled PHEV vehicle
- 🐼 to use PANDA simulation to assist/verify e-drive sizing
- 🐼 to allow comparison between simulations and measurements
- 🐼 to test an equivalent vehicle strategy between democar and simulation





# End of presentation

[www.project-panda.eu](http://www.project-panda.eu)



SIEMENS

