

Final Event
24-25th of May 2022

Industrial Feedback

Industrial partners in PANDA



Powerful **A**dvanced **N**-Level **D**igital **A**rchitecture
for models of electrified vehicles and their components

Willem van Dorp
UNR



www.project-panda.eu

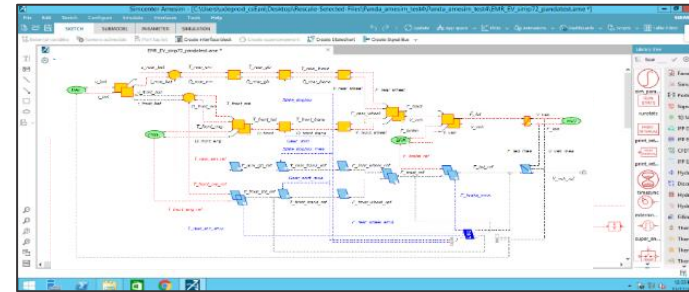
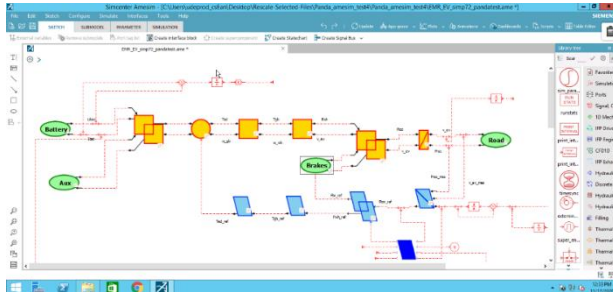
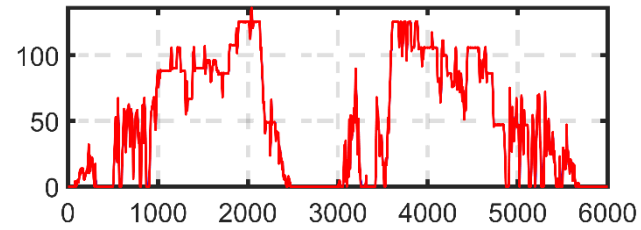


Vehicle simulation & validations



**Renault
Group**

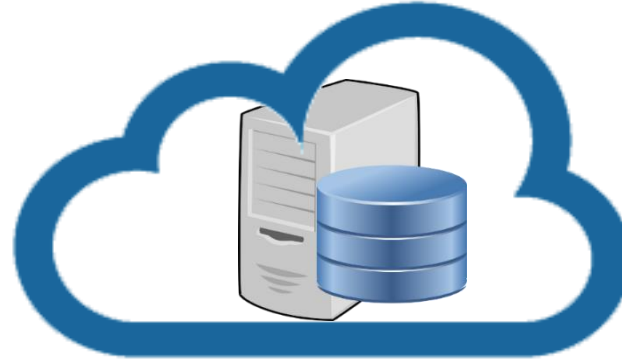
Valeo



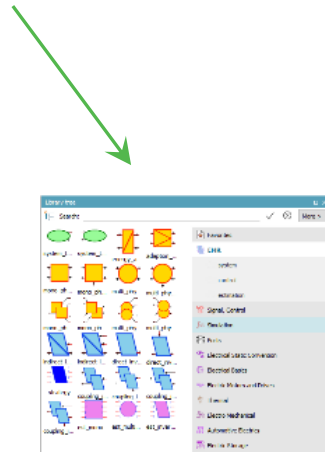
Simulation packages & Cloud



SIEMENS

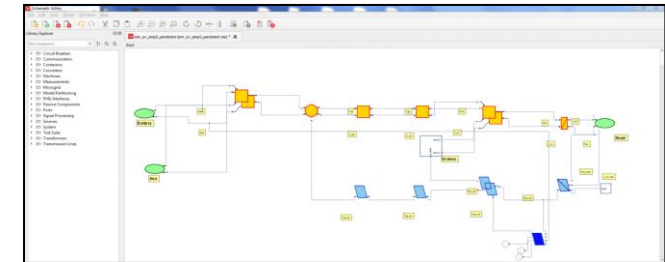


Common PANDA Cloud



EMR library in
Simcenter Amesim ©

translator

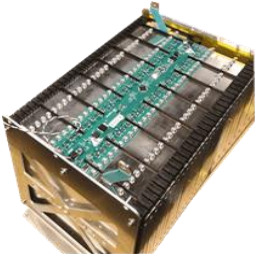


EMR library in
Typhoon HIL control centre ©

Common battery and HIL ECU for a real collaborative work



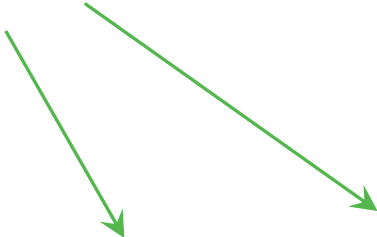
BLUWAYS



2 batteries modules

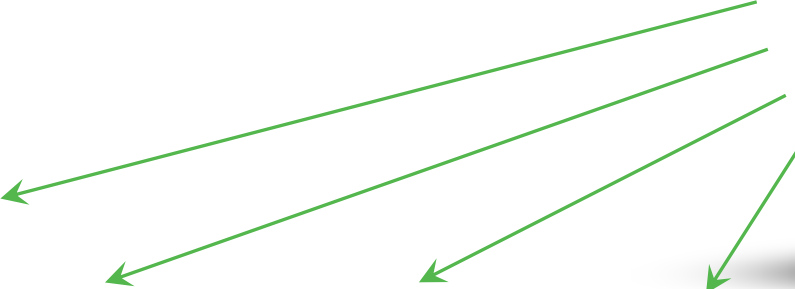


4 HIL ECUs



Université de Lille

VUB VRIJE UNIVERSITEIT BRUSSEL



UNIVERSITATEA TEHNICĂ

SIEMENS

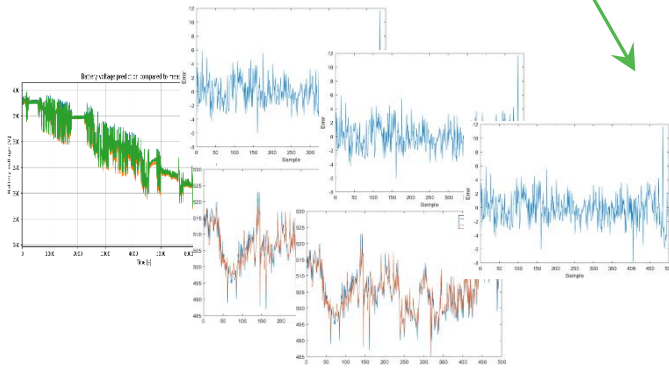


Black-box models for safe IP development

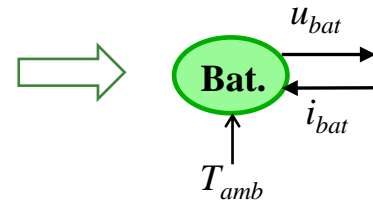


SIEMENS

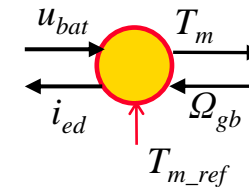
Valeo



Black-box



Black-box





Thanks for your attention!

www.project-panda.eu

